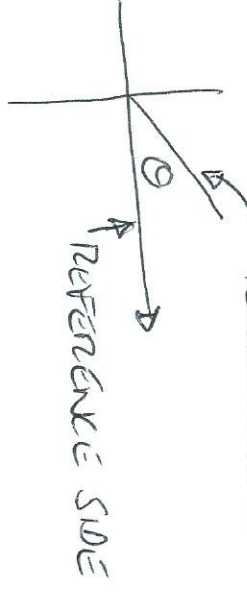
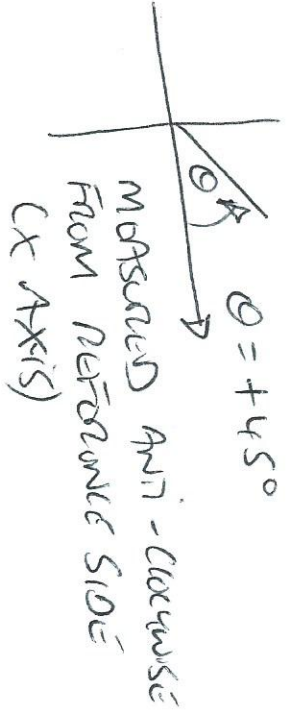


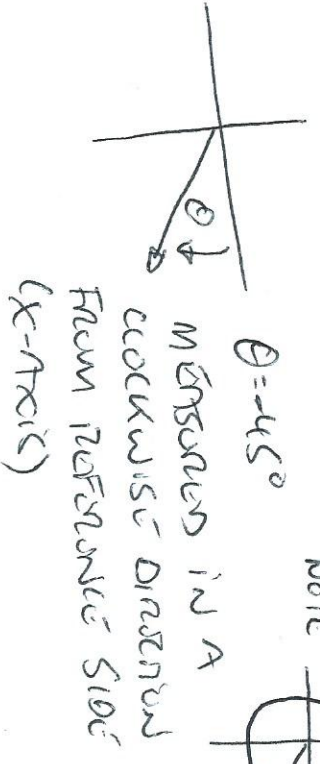
① REFERENCE AND TERMINAL SIDES



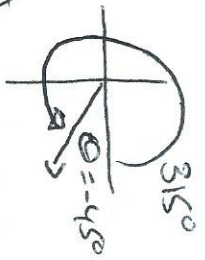
② POSITIVE ANGLES



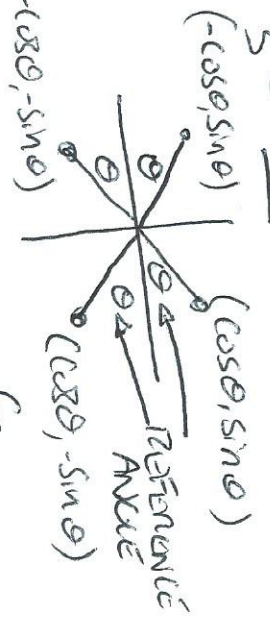
③ NEGATIVE ANGLES



NOTE



⑤ CAST

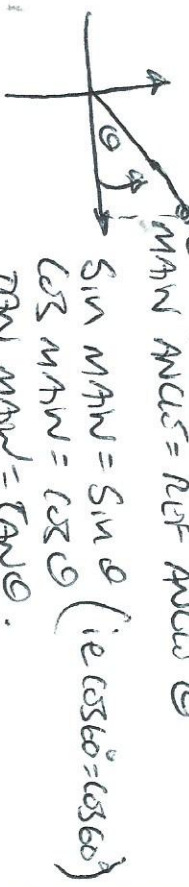


{ (x, y) coords of P on unit circle }

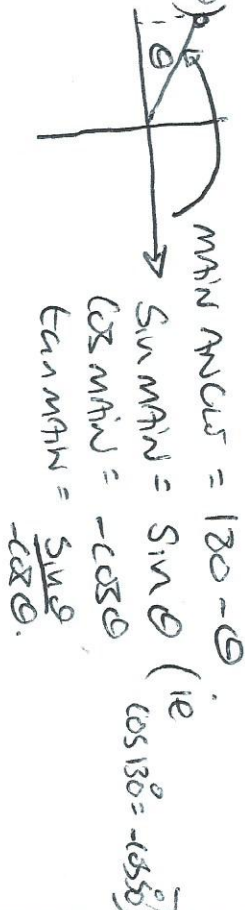
• USING CAST TO FIND THE

SIN, COS, TAN OF A "MAIN" ANGLE > 90° USING THE "REFERENCE ANGLE" & GENERATORS.

IN QUND I

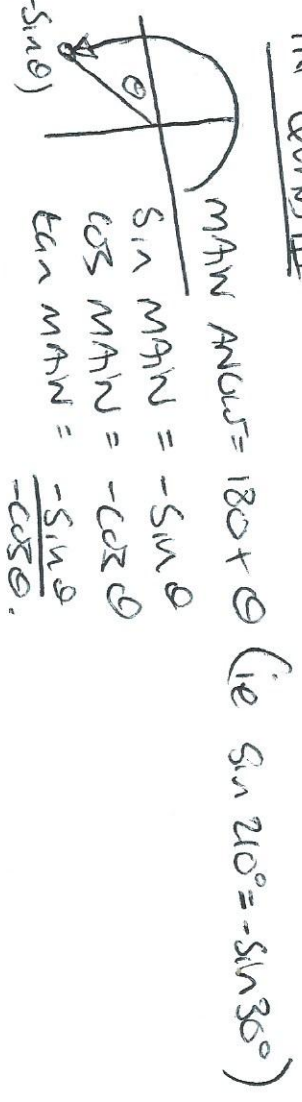


IN QUND II

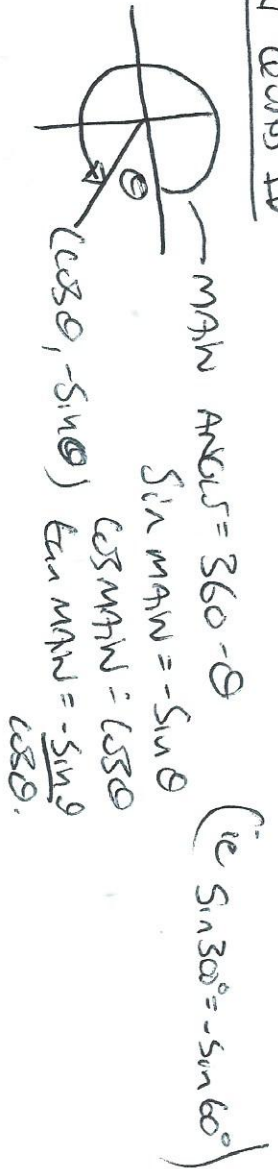


CASTE

IN QUND III



IN QUND IV



④ SIGNS AND ANGLES

NOTES
 $-\cos \theta \neq \cos(-\theta)$
 $-\cos 45^\circ \neq \cos(-45^\circ)$
 $-\sin \theta \neq \sin(-\theta)$