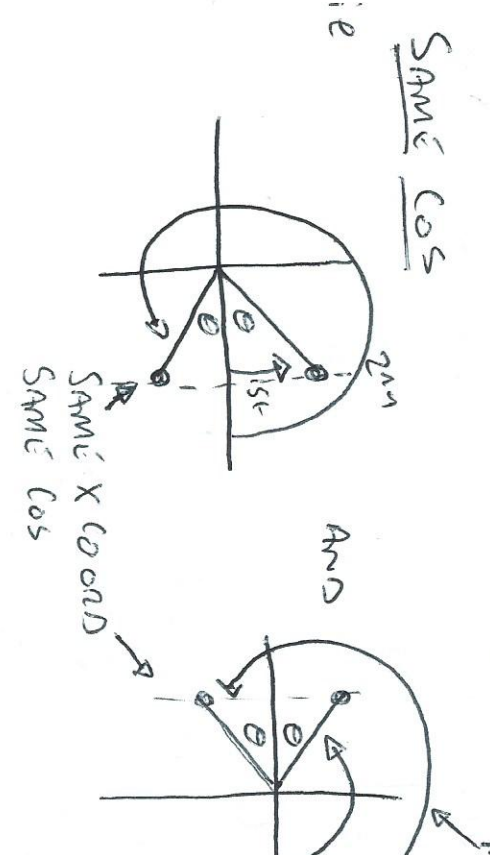
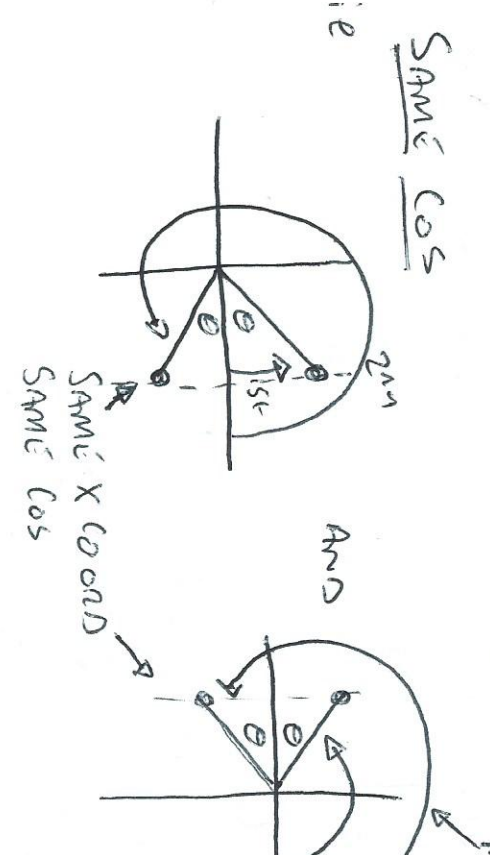
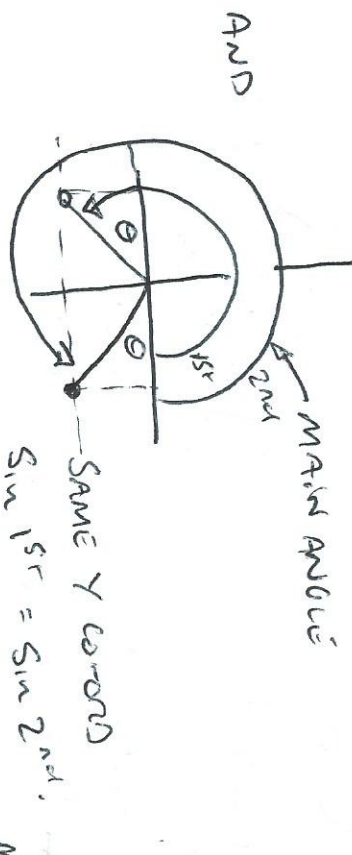
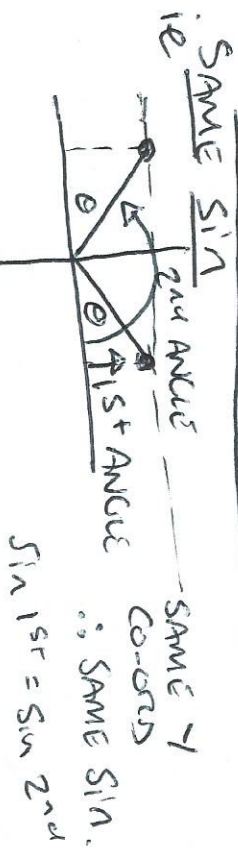
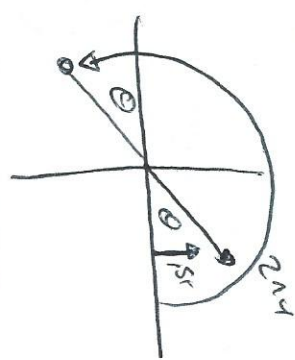


NB

TWO MAIN ANGLES CAN HAVE THE SAME SIN. TWO MAIN ANGLES CAN HAVE THE SAME COS. TWO MAIN ANGLES CAN HAVE THE SAME TAN.

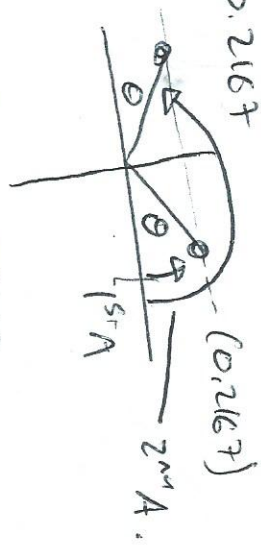


SAME TAN

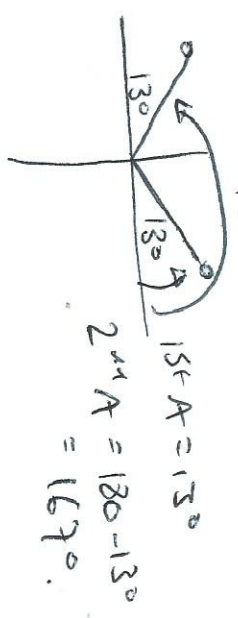


EXAMPLES (3)

FIND, NO NUMBERS, 2 VALUES OF A IF $0^\circ \leq A \leq 360^\circ$
 $\sin A = 0.2167$
 AND IE FIND THE TWO MAIN ANGLES WITH $\sin A = 0.2167$



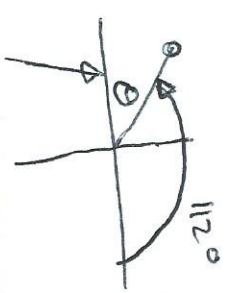
∴ $\sin A = 0.2167$
 $A = \sin^{-1}(0.2167)$
 $= 13^\circ$



$2nd A = 180 - 13^\circ$
 $= 167^\circ$

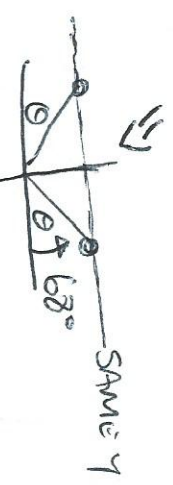
EXAMPLE (1)

WHAT ANGLE BETWEEN OF AND 360 HAS THE SAME SINE AS 112°



CLASS II

$\theta = 180 - 112 = 68^\circ$



∴ 68° HAS SAME SINE AS 112°

EXAMPLES (2) WHAT ANGLE HAS SAME SINE AS 300°



∴ 2nd A = 180 + 30° = 210°

EXAMPLE (4) FIND, CORRECT TO NEAREST °, THE TWO VALUES FOR A IF $\cos A = -0.84728$

ANS FIND 2 MAIN ANGLES A WITH $\cos A = -0.84728$



$\cos A = -0.84728$
 $A = \cos^{-1}(-0.84728)$
 $A = 147^\circ$
 NB... IF $A = 147^\circ$
 $\Rightarrow \theta = 33^\circ$
 $\therefore 2nd A = 180 + 33^\circ = 213^\circ$